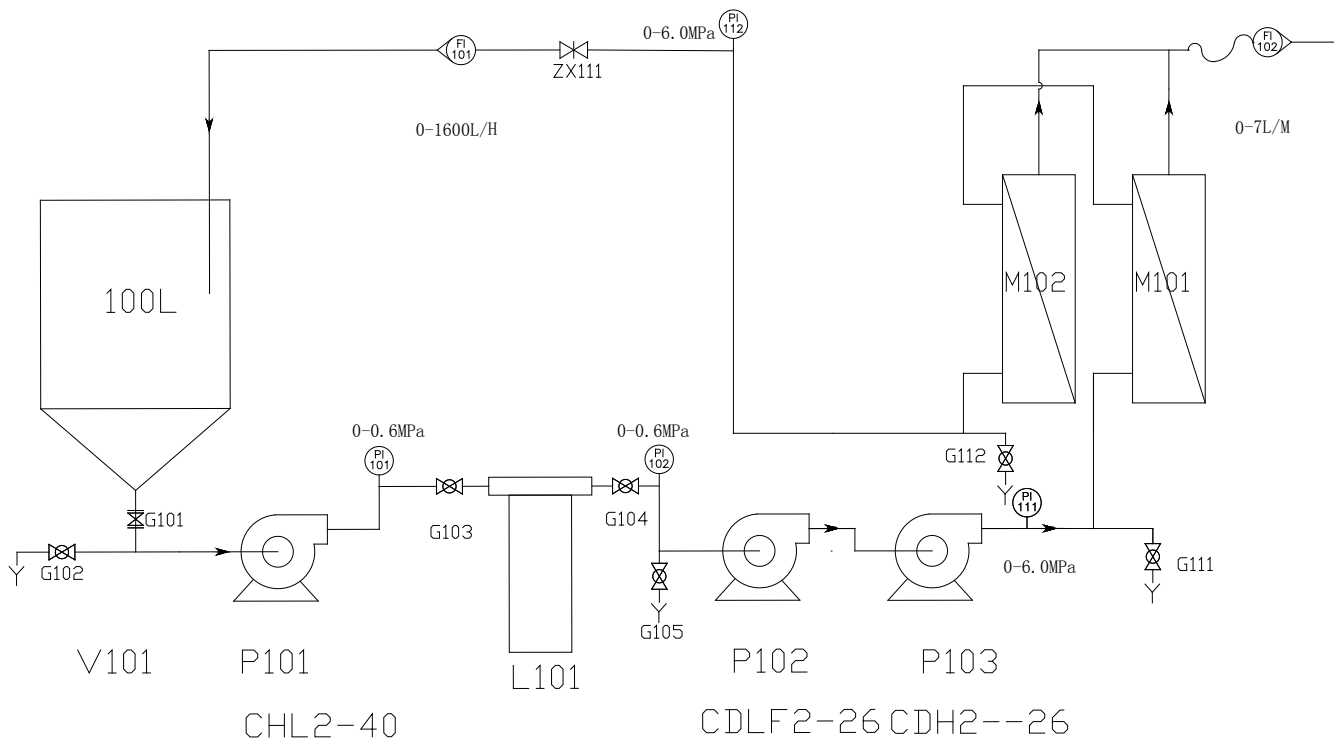




.....	2
.....	2
.....	3
.....	4
.....	4
.....	5
.....	6
.....	7

Bar



	V101	P101	P10 -	M101-
1				
	V101	G10	ZX111	G10
G10	G111		P101	
	V101	G10	ZX111	G10
G111			P101	P101-
	ZX111			
	V101			

1. ,  
- L ,

41Bar

4.

6. 4040 7 400L/H,  
- L/H, 100—1000L/H

7. 04

8

4040	
	WTM-4040G-2
	4040
	7 *2
	4.1Mpa
	5—45
	PH 1--14
	20-30L
	400L/H (0.8MPa)
	150—250L/h
	100—1000L

1					1	
2		Q= m <sup>3</sup> /H H= m 0r/m			1	
3		Q= m <sup>3</sup> /H H= 0m 0r/m			1	
4		-4040-600P				
5		100 7	TFM			SUEZ 4040
6		KW			1	
7		60Bar				
8		0- L/H				
9		0- L/H			1	
10		1			1	
11		1				
12		1			1	
13					1	
14					1	
					1	

60

1

17%

4040

-4040F			PVDF	SUEZ
-4040F		0.04	PS	SUEZ
-4040F		100000	PVDF	
F801-4040F			PES PS	
-4040F			PAN	SUEZ
-4040F		10000	PES	SUEZ
-4040F		8000	TFM	SUEZ
-4040F			PES	SUEZ
-4040F			TFM	SUEZ
-4040F			TFM	SUEZ
-4040F		1000	TFM	SUEZ
-4040F		-	TFM	SUEZ
-4040F		-400	TFM	SUEZ
A101-4040F		SE SG	TFM	SUEZ

